

Type 52-02 Rubber Foot

100 kg...10 t



Rubber foot 52-02 and SB4 load cell

Flintec load cell supports are designed to prevent unwanted forces from affecting load cell performance.

The Type 52-02 is a self aligning rubber foot, combining excellent load introduction with low profile design.

A special low profile foot is available.

The height is adjustable by shims.

Especially designed for the SB4, SB5, SB14 and SLB load cells.

Material: steel, zinc plated; alternatively stainless steel.

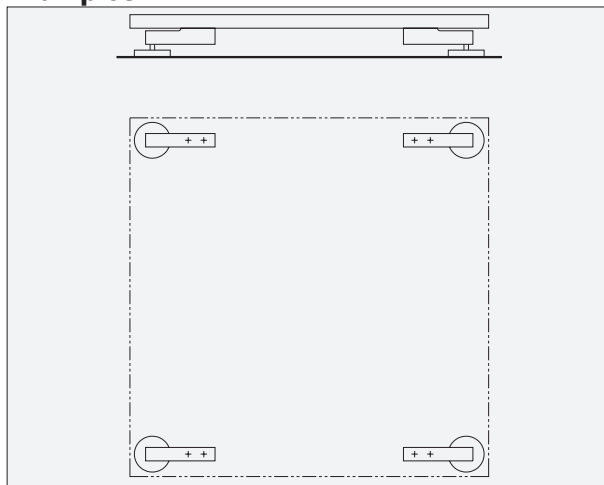
Important Features

- Blind hole load introduction.
- Capacity range: 100 kg to 10000 kg.
- Low profile.
- Height adjustable with shims.
- Very easy to install.
- Especially designed for platform scales.
- W&M certified.
- A special low profile foot is available.

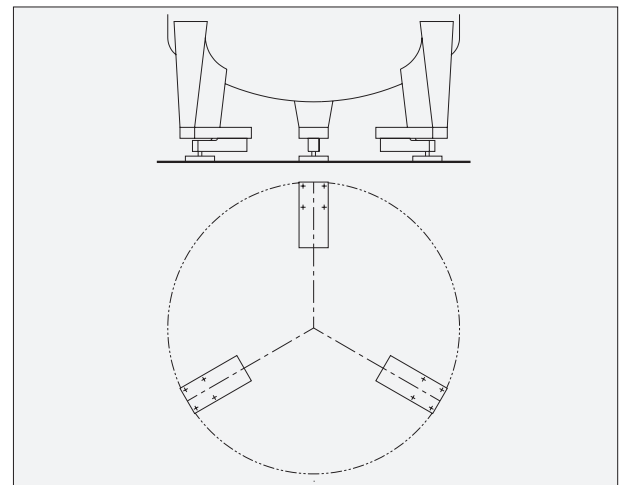
Accessory

- Fixation plate.

Examples

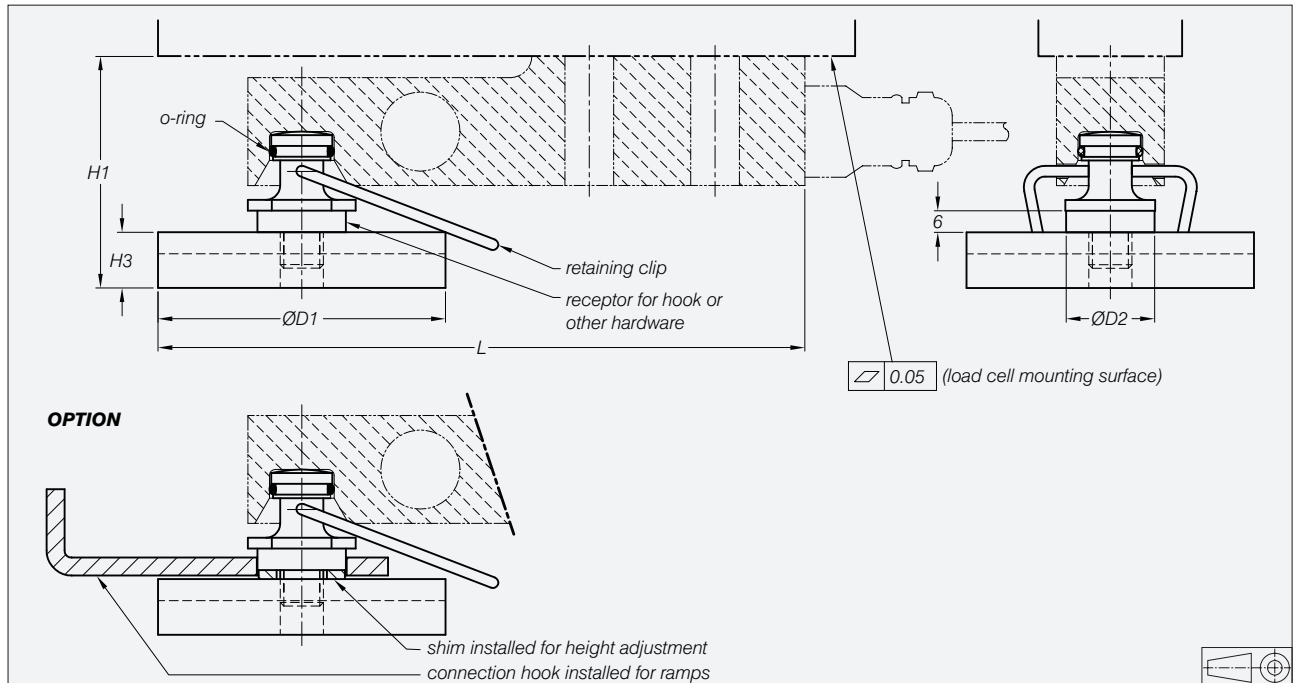


Platform scale with 4 load cells



Tank weighing system with 3 load cells
(recommended base plate 52-00 included)

Dimensions



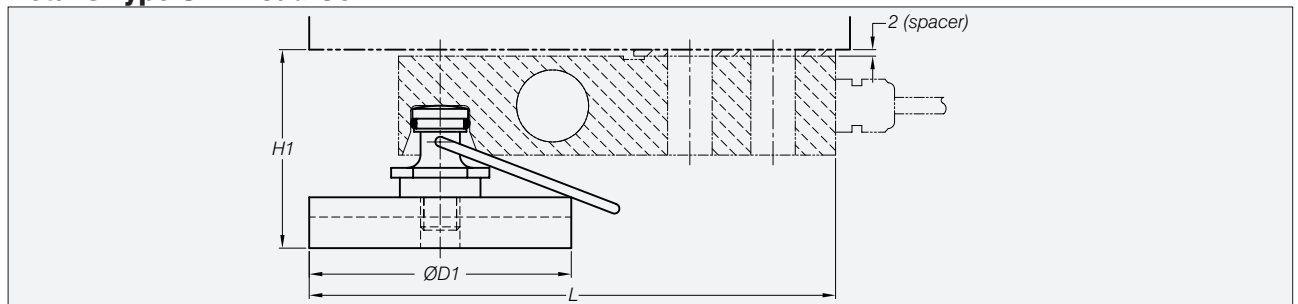
Load Cell Type	Capacity in kg	L	H1	H2	H3	D1	D2
SB4/SB5-5 kN/10 kN/20 kN	510/1020/2039	180	65	58	16	80	24.5
SB4/SB5-50 kN	5099	219	90	n.a.	18	100	34.5
SB4-100 kN**	10179	278	115	n.a.	26	125	44
SB14-1 klb	454	164	60	53	16	80	24.5
SB14-2.5 klb/5 klb	1134/2268	164	62*	55*	16	80	24.5
SLB-200 lb/500 lb	91/227	154	61*	54*	16	60	24.5
SLB-1 klb/2.5 klb/5 klb	454/1134/2268	164	61*	54*	16	80	24.5

* Including spacer.

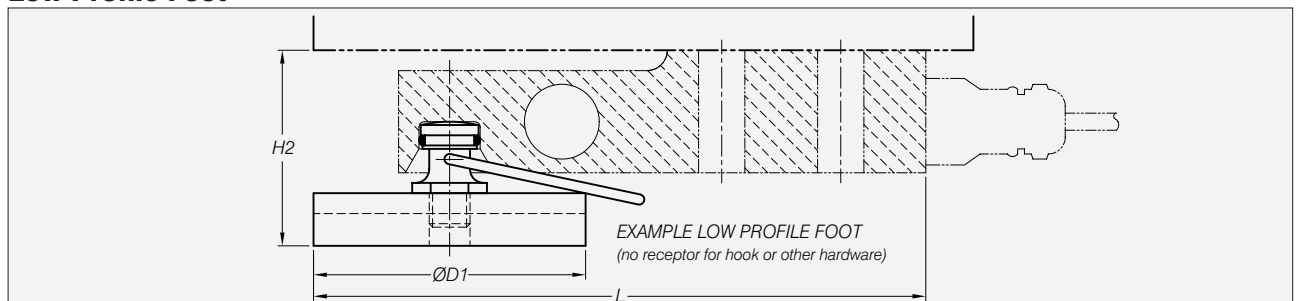
** Material: painted steel. A special retaining clip is available.

All dimensions in mm. Dimensions and specifications are subject to change without notice. CAD files for customer's own applications are available on request.

Details Type SLB Load Cell



Low Profile Foot

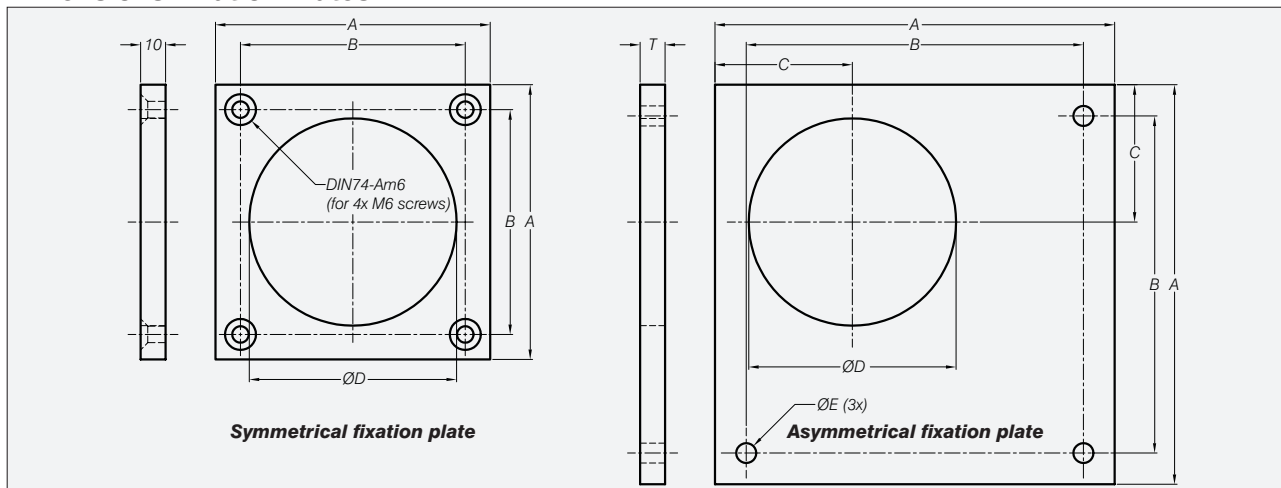


Fixation Plates for Rubber Feet

Material: black polypropylen

- Symmetrical 200 lb...500 lb / 200 N...2 kN.
- Symmetrical 5 kN...20 kN / 1 klb...5 klb.
- Asymmetrical 200 lb...500 lb / 200 N...2 kN.
- Asymmetrical 5 kN...20 kN / 1 klb...5 klb.
- Asymmetrical 50 kN.

Dimensions Fixation Plates



	A	B	C	ØD	ØE	T
Symmetrical 200 lb...500 lb / 200 N...2 kN	90	70	n.a.	62	n.a.	n.a.
Symmetrical 5 kN...20 kN / 1 klb...5 klb	110	90	n.a.	83	n.a.	n.a.
Asymmetrical 200 lb...500 lb / 200 N...2 kN	140	115	45	62	8	10
Asymmetrical 5 kN...20 kN / 1 klb...5 klb	160	135	55	83	8	10
Asymmetrical 50 kN	160	155	65	104	11.5	15